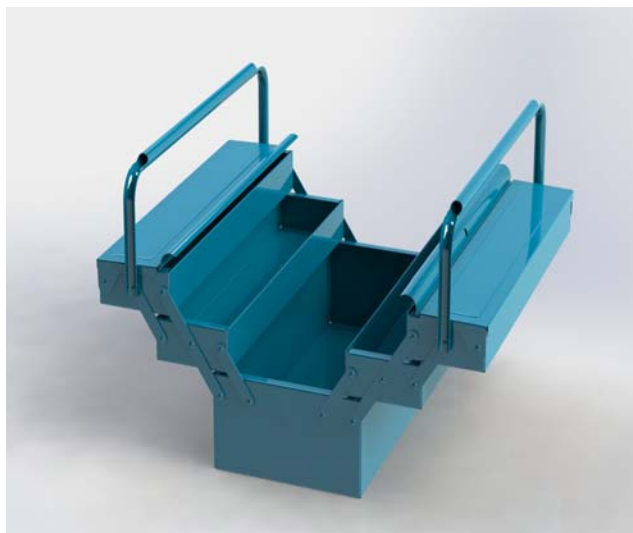


PORTAUTENSILI A SCOMPARTI – COMPARTMENT TOOL BOXES

Portautensili a scomparti, costruite in lamiera spessore 7/10, impugnatura a doppio manico, verniciatura con polveri epossidiche.

Compartment tool boxes made of metal sheet 7/10 thickness, double swivelling handle, epoxy powder coating.



Cod.	Art.	Dimensioni /Dimensions
B001/01	A1	mm. 430x200x110 h
B001/02	A3	mm. 430x200x160 h
B001/04	A5	mm. 430x200x200 h
B001/05	A5L	mm. 530x200x200 h

VALIGIE VANO VUOTE – EMPTY CASES

Valigie vano vuoto, disponibili in 2 dimensioni. Chiusura con cricchetti in ferro, cerniera in acciaio.

Empty cases available in 2 sizes. Closures with catches and steel hinges.



Cod.	Art.	Dimensioni /Dimensions
B010/02	Combi 2	mm. 390x255x80 h
B010/03	Combi 3	mm. 510x290x120 h

PORTAMINUTERIE – SMALL PART CONTAINERS

Portaminuterie disponibili in diverse dimensioni, lamiera 8/10, chiusura con cricchetto in ferro, cerniera in acciaio, verniciatura con polvere epossidica bucciata.

Small parts containers, provided in different dimensions, made up in metal sheet 8/10, with catches and hinge in stainless steel. Orange-peel finish epoxy powder coating.



Cod.	Art.	Dimensioni /Dimensions
B005/02	12 P	mm. 325x250x70 h



Cod.	Art.	Dimensioni /Dimensions
B006/02	18 P	mm. 485x250x70 h



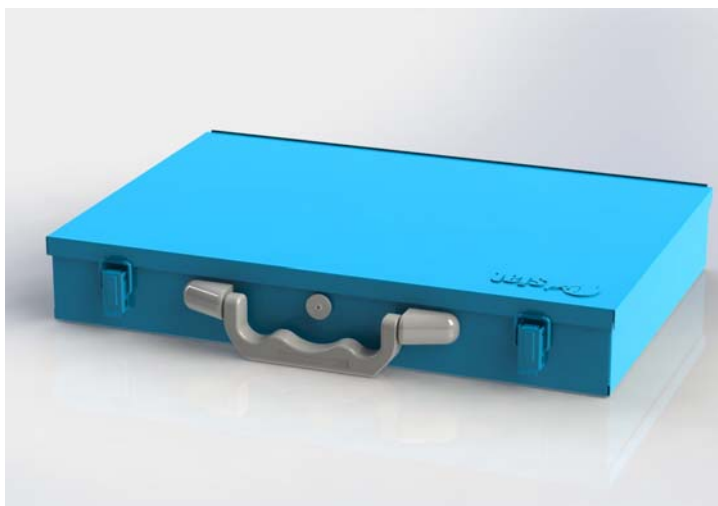
Cod.	Art.	Dimensioni /Dimensions
B007/01	36 P	mm. 450x250x115 h

VALIGIE V – CASES V

Valigie vuote disponibili in 3 altezze, dotate di pulsante di sicurezza e doppia chiusura in ferro, possono essere dotate di kit interno con divisori o vaschette in plastica.

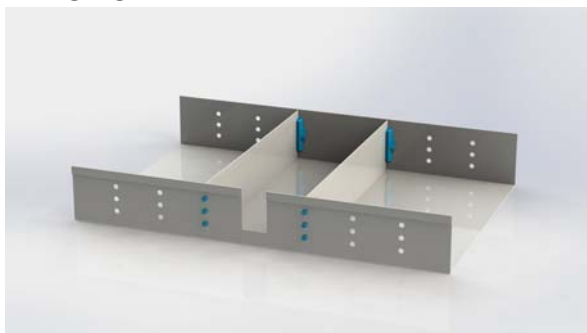
Empty cases, available in 3 heights, with security button and double closure in steel, can be equipped with partitions or plastic boxes.

V 070

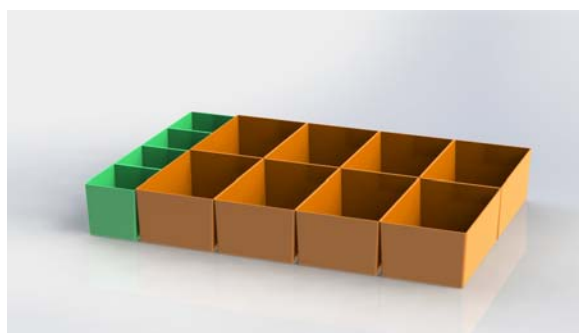


Cod.	Art.	Dimensioni Dimensions
N015/00	V 070	mm. 470x320x70 h
N015/01	KV 070	2 divisori / partitions
N015/02	KVP 12	12 vaschette / boxes
N015/03	KVP 20	20 vaschette / boxes
N015/04	KVP 28	28 vaschette / boxes

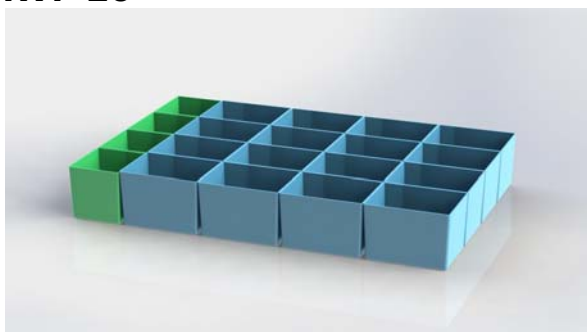
KV 070



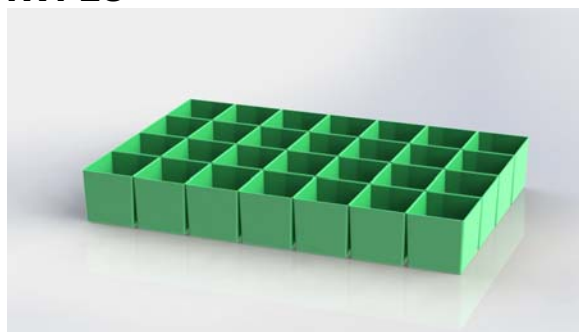
KVP 12



KVP 20



KVP28

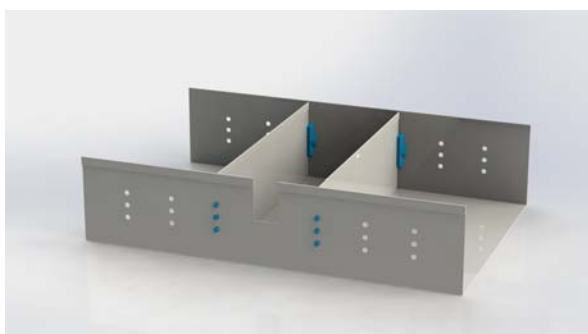


V 108



Cod.	Art.	Dimensioni Dimensions
N016/00	V 108	mm. 470x320x108 h

KV 108



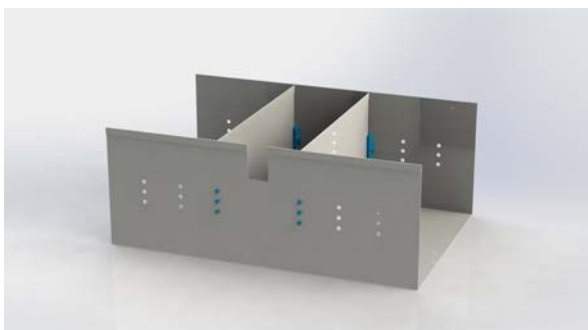
Cod.	Art.	Descrizione Description
N016/01	KV 108	2 divisori / partitions

V 180



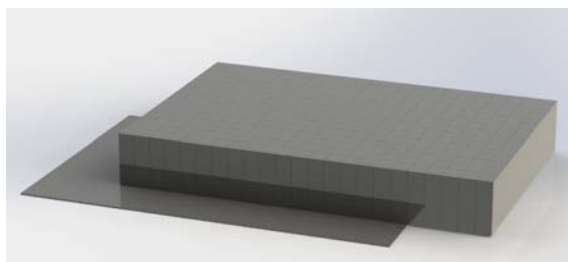
Cod.	Art.	Dimensioni Dimensions
N017/00	V 180	mm. 470x320x180 h

KV 180



Cod.	Art.	Descrizione Description
N017/01	KV 180	2 divisori / partitions

SPUGNA PREFORATA PER VALIGIE E CASSETTI **PREFORATED SPONGE FOR CASES AND DRAWERS**

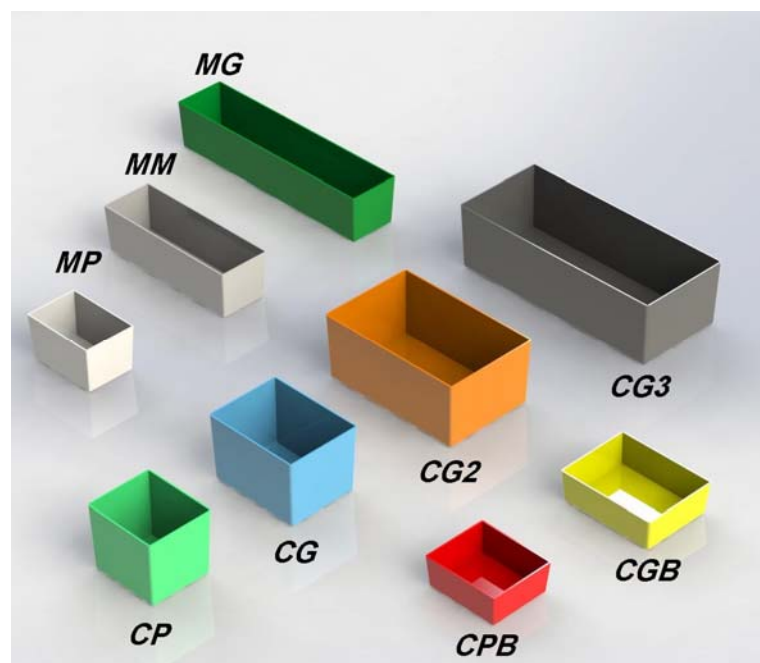


Cod.	Art.	Dimensioni Dimensions
N031/01	KP	mm. 460x305x65 h
N031/02	KG	mm. 460x305x175 h

VASCHE IN PLASTICA ANTIURTO **SHOCKPROOF PLASTIC BOXES**

Vaschette in plastica antiurto per contenitori, porta minuterie e valigie.

Shockproof plastic boxes for small parts containers and cases.



Cod.	Art.	Dimensioni Dimensions
N100/01	MP	mm. 75x50x47 h
N100/02	MM	mm. 155x50x47 h
N100/03	MG	mm. 233x50x47 h
N100/04	CP	mm. 72x61x65 h
N100/05	CG	mm. 72x95x65 h
N100/06	CPB	mm. 72x61x33 h
N100/07	CGB	mm. 72x95x33 h
N100/08	CG2	mm. 150x95x65 h
N100/09	CG3	mm. 255x95x65 h

CONTENITORI VANO VUOTO – EMPTY CONTAINERS

Contenitori vuoti di diverse dimensioni, chiusura con cricchetti in ferro, verniciatura con polvere epossidica bucciata.

Empty containers in different dimensions, closure with catches, orange – peel finish epoxy powder coating.

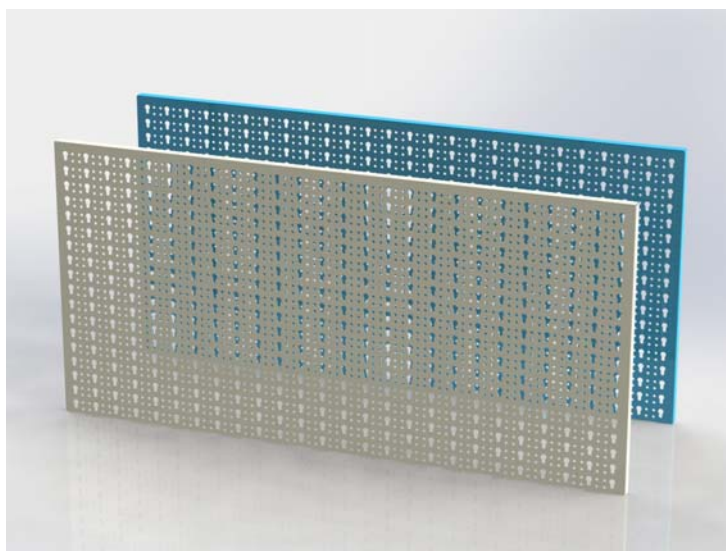


Cod.	Art.	Dimensioni Dimensions
B009/01	Astor A	mm. 420x200 140 h
B009/02	Astor B	mm. 355x185x120 h
B009/04	Torino	mm. 510x260x180 h
B009/05	Aosta	mm. 600x270x220 h

PANNELLI APPENDIUTENSILI CON FORO A CHIAVE TOOL HANGING PANELS WITH KEY HOLE

Pannelli appendit utensili in lamiera con foro a chiave.

Tool hanging panels with key hole.

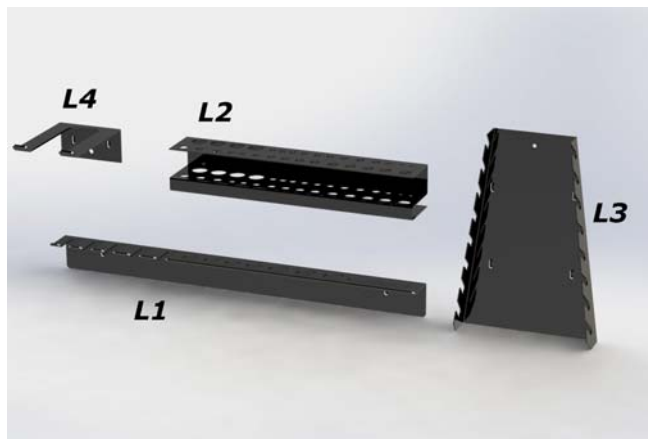


Cod.	Art.	Dimensioni Dimensions
B022/01	Pannello AZ	mm. 1000x500 h
B022/02	Pannello AV	mm. 1000x500 h

GANCI LAMIERA – METAL HOOKS

Ganci in lamiera per pannello appenditensili foro chiave.

Metal hooks for tool hanging panels with key hole.



Cod.	Art.	Dimensioni Dimensions
B024/01	L 1	Cacciaviti /screwdrivers
B024/02	L 2	Punte/bits
B024/03	L 3	Chiavi/ spanners
B024/04	L 4	Martello / hammer

GANCI PLASTICA – PLASTIC HOOKS

Ganci in nylon per pannello appenditensili foro chiave.

Plastic hooks for tool hanging panels with key hole.



Cod.	Art.	Dimensioni Dimensions
B025/01	P 1	
B025/02	P 2	
B025/03	P 3	
B025/04	P 4 - 10	mm. 100
B025/05	P 4 - 15	mm. 150
B025/06	P 4 - 20	mm. 200
B025/07	P 5	

BANCO DA LAVORO PIEGHEVOLE – FOLDING WORKTABLE

Tavolo da lavoro pieghevole con piano in faggio stratificato da 30 mm. Telaio e gambe in tubi di acciaio saldati.

Folding worktable, made of beech mm. 30. Frame and legs welded steel tubes.

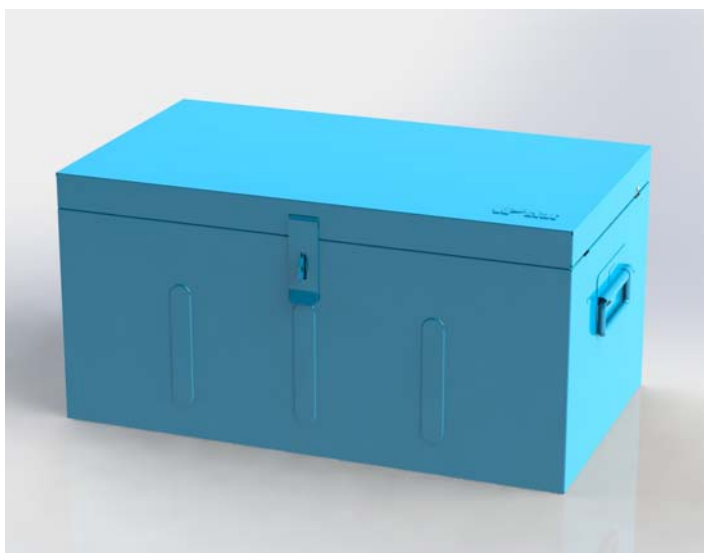


Cod.	Art.	Dimensioni Dimensions
B040/01	Bobo 8	mm. 800x500x840 h
B040/02	Bobo 10	mm. 1000x700x840 h
B040/03	Bobo 12	mm. 1200x700x840 h

BAULI IN LAMIERA TR – TR TRUNKS

Serie di bauli in lamiera. Disponibili in 4 dimensioni. Maniglie laterali per una facile presa, chiusura centrale lucchettabile, bielle ferma coperchio.

Series of trunks of metal sheet. Available in 4 sizes. Lateral handles for an easy hold, central padlockable closure, connecting rods holding lid.



Cod.	Art.	Dimensioni Dimensions
B030/01	TR 1	mm. 700x400x350 h
B030/04	TR 4	mm. 900x400x400 h
B030/06	TR 6	mm. 800x400x400 h
B030/08	TR 8	mm. 650x350x350 h
B031/01	C TR	mm. 500x360x70 h

CONTENITORI APERTI IN ALLUMINIO: SERIE U ALUMINIUM OPEN CONTAINERS: SERIE U

Casse in alluminio 0,8 mm. Ideali per la conservazione ed il trasporto di alimenti e di qualsiasi altra cosa. Resistenti alla corrosione ed agli agenti atmosferici. Sono dotate di grandi maniglie per una facile presa.

Boxes made of 0,8 mm aluminium sheet. They are ideal for storing and transporting foodstuffs and also anything else. Resistant against corrosion and weather conditions. Provided by comfortable handles.



Cod.	Art.	Dimensioni Dimensions
B034/01	U 28	mm. 387x290x250 h
B034/02	U 56	mm. 587x387x250 h
B034/03	U 113	mm. 780x587x250 h

BAULI IN ALLUMINIO – ALUMINIUM TRUNKS : SERIE D

Robuste casse in alluminio spessore 1 mm, con angoli impilabili. Resistenti alla corrosione ed agli agenti atmosferici.

Sturdy boxes from 1 mm. aluminium sheet, equipped with durable stocking corner pieces. Resistant against corrosion and weather conditions.



Cod.	Art.	Dimensioni Dimensions
B035/01	D 29	mm. 432x335x277 h
B035/02	D 47	mm. 582x385x277 h
B035/03	D 76	mm. 592x388x409 h
B035/04	D 91	mm. 782x385x379 h
B035/05	D 140	mm. 902x495x379 h
B035/06	D 157	mm. 782x585x412 h
B035/07	D 163	mm. 1182x385x412 h
B035/08	D 240	mm. 782x585x622 h
B035/09	D 415	mm. 1192x790x517 h

CHIUSURA A CILINDRETTO PER BAULE ALLUMINIO CLOSURE FOR ALUMINIUM CONTAINERS



Cod.	Art.	Descrizione Description
N102/01	CC	Chiusura /closure

LUCCHETTO PER BAULI IN LAMIERA ED ALLUMINIO PADLOCK FOR METAL AND ALUMINIUM TRUNKS



Cod.	Art.	Descrizione Description
N102/00	CL	Lucchetto/ padlock

CARRELLO PORTAUTENSILI WORKSHOP TROLLEY

**Carrello portautensili con 7 cassetti e chiusura con chiave centrale.
Ruote in gomma diam. 160 di cui 2 fisse e 2 girevoli. Bloccaggio ruote.**

Workshop trolley with 7 drawers and central lock with key. Two fixed wheels 160 mm. dia and two swivel wheels 160 mm dia (one swivel with brake)



Cod.	Art.	Dimensioni Dimensions
B050/01	SW07	mm. 750x450x890 h

ROLLER 2013
ROLLER 2013



Cod.	Art.	Dimensioni Dimensions
B050/02	Roller	mm. 890x530x890 h