

## ACCESSORI - ACCESSORIES

### **Gronda allungabile** **Extensible gutter**



Cod.	Art.	Dimensioni /Dimensions
N075/01	GR	mm. 1600/3100x270x60 h

### **Armadi** **Closets**

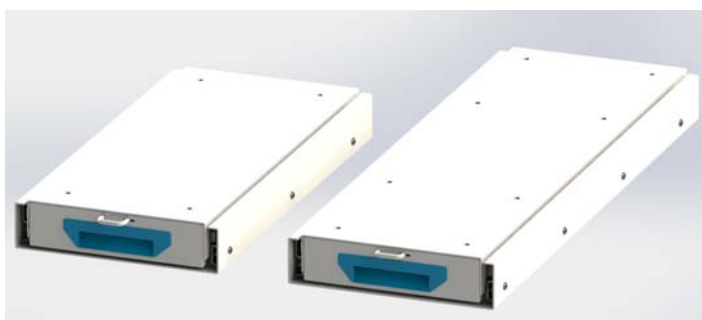


Cod.	Art.	Dimensioni /Dimensions
N076/01	AR 485	mm. 533x357x485 h
N076/02	AR 970	mm. 533x357x970 h

### **Slitte estraibili** **Extractable tables**

**Slitta estraibile su guide telescopiche, per generatori. Portata 150 Kg.**

**Extractable table on telescopic guides. Load up to kg. 150.**



Cod.	Art.	Dimensioni /Dimensions
N077/01	SLITTA P	mm. 750x380x80 h
N077/02	SLITTA G	mm. 1050x380x80 h

## **Banco da lavoro ribaltabile** **Titling table**

**Banco da lavoro a ribalta pneumatica.**

**Banco da lavoro a ribalta pneumatica con gamba d'appoggio.**

**Pneumatic titling table. Pneumatic tilting table with supporting leg.**



<b>Cod.</b>	<b>Art.</b>	<b>Dimensioni /Dimensions</b>
N078/01	Pneu	mm. 215x264x987 h
N078/02	Pneu CG	mm. 218x298x1114 h

---

## **Morsa** **Steel vice**

**Morsa in acciaio con ganasce stringi tubo e base girevole.**

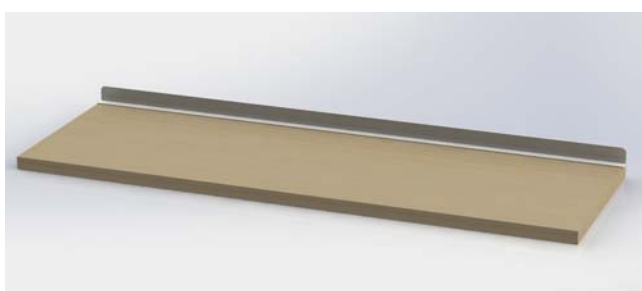
**Steel vice with tube – docking jaws and rotary bench.**



<b>Cod.</b>	<b>Art.</b>	<b>Dimensioni /Dimensions</b>
N079/01	TE 100	mm. 115
N079/02	TE 125	mm. 150

---

## **Ripiani di lavoro in multistrato betulla 25 mm.** **Worktops mm. 25**



<b>Cod.</b>	<b>Art.</b>	<b>Dimensioni /Dimensions</b>
N080/01	RDL A	mm. 533x357x25 h
N080/02	RDL B	mm. 799x357x25 h
N080/03	RDL C	mm. 1066x357x25 h
N080/04	RDL D	mm. 1332x357x25 h

## **Selle portacavi** **Cable hangers**

**Selle portacavi in alluminio, disponibili in 3 dimensioni.**

**Cable hanger in aluminium, available in 3 sizes.**



<b>Cod.</b>	<b>Art.</b>	<b>Dimensioni /Dimensions</b>
N081/02	Sella P	mm. 140x60x70 h
N081/03	Sella M	mm. 190x90x80 h
N081/04	Sella G	mm. 260x125x90 h

## **Luci** **Lamps**

**Lampade 12V fisse o con base magnetica.**

**Lamps 12V fixed or with magnetic base.**

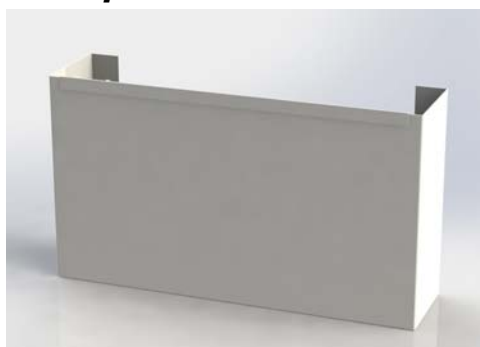


<b>Cod.</b>	<b>Art.</b>	<b>Dimensioni /Dimensions</b>
N082/01	Proiettore	
N082/02	Rotante	
N082/03	Plafoniera	mm. 400x75

## **Tasca laterale** **Side pocket**

**Tasca laterale portaoggetti o portadocumenti.**

**Item pocket.**



<b>Cod.</b>	<b>Art.</b>	<b>Dimensioni /Dimensions</b>
N083/02	TLG	mm. 320x80x180 h

## **Valigetta pronto soccorso**

### **First aid case**

**Valigetta pronto soccorso conforme norma DIN 13164 B.**

**First aid case according to DIN 13164 B**



<b>Cod.</b>	<b>Art.</b>	<b>Riferimento/Reference</b>
N084/01	SOS	Conforme a / according to DIN 1316

---

## **Serbatoio acqua e portasapone**

### **Water tank and soaptray**

**Serbatoio acqua con portasapone. Capacità 10 litri.**

**Water tank with soap tray. Capacity 10 litres.**

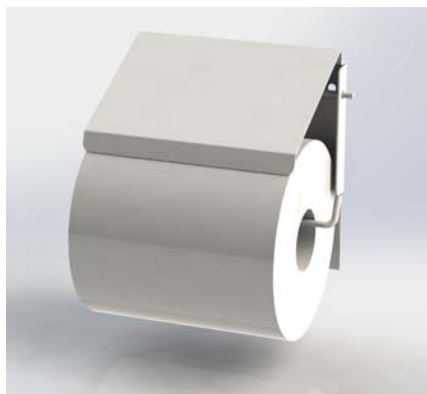


<b>Cod.</b>	<b>Art.</b>	<b>Dimensioni /Dimensions</b>
N085/01	ACQ 1	mm. 290x150x340 h
N085/02	PS	Porta sapone / soap tray

---

## **Portacarta**

### **Paper roll support**

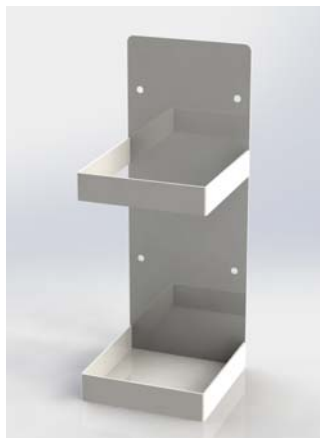


<b>Cod.</b>	<b>Art.</b>	<b>Dimensioni /Dimensions</b>
N086/02	PC 2	mm. 640x300x300 h

## **Portaestintore Extinguisher holder**

**Portaestintore per estintori diametro 165.**

**Extinguisher holder diameter 165**



<b>Cod.</b>	<b>Art.</b>	<b>Dimensioni /Dimensions</b>
N088/01	PE 165	mm. 170x165x350 h

## **Portataniche Canister holder**

**Portataniche da pavimento, per taniche in metallo e plastica.**

**Canister holder for floor installation, ideal for metal and plastic canisters.**



<b>Cod.</b>	<b>Art.</b>	<b>Dimensioni /Dimensions</b>
N089/01	TCH	mm. 345x360x350 h

## **Set di ancoraggi per il fissaggio Anchoring set for fastening**

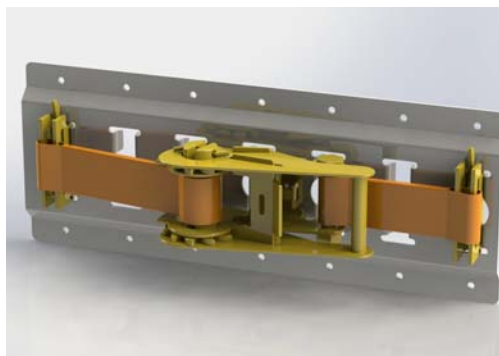


<b>Cod.</b>	<b>Art.</b>	<b>Descrizione / Description</b>
N090/01	AN 1	per monoblocchi / for elements
N090/02	AN 2	per pavimento / for floor
N090/03	AN 3	per pareti / for walls

## **Portabombole Cylinder Holder**

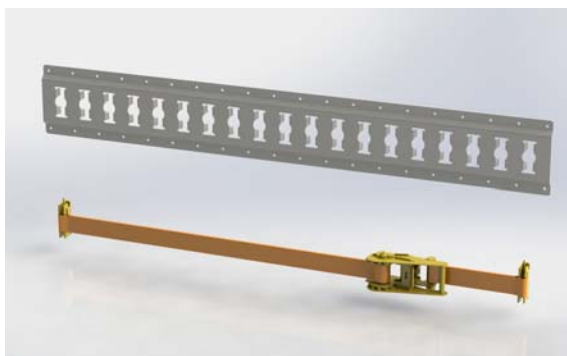
**Portabombole con cinghia, per bloccare ogni tipo di bombola.**

**Pressure cylinder holder with belt.**



<b>Cod.</b>	<b>Art.</b>	<b>Dimensioni / Dimensions</b>
N091/01	PB	mm. 350

## **Barre di ancoraggio e cinghie di fissaggio Anchoring rails and fastening belts**



<b>Cod.</b>	<b>Art.</b>	<b>Dimensioni / Dimensions</b>
N092/02	Barra 10	mm. 1000
N092/03	Barra 15	mm. 1500
<b>Cod.</b>	<b>Art.</b>	<b>Dimensioni / Dimensions</b>
N092/05	Cinghia 20A	mm. 2000
N092/06	Cinghia 30B	mm. 3000

## **Barra telescopica – guida - anello Telescopic bar – rail - ring**



<b>Cod.</b>	<b>Art.</b>	<b>Dimensioni / Dimensions</b>
N093/01	Barra telescopica	mm. 1500x 2050
N093/02	Guida	mm. 2000
N093/03	Anello per guida	
N093/04	Guida con spine PVC	mm. 2000

## Contenitori MB MB containers

**Contenitori MB, dotati di cassetti trasparenti ed estraibili, fermi per chiusura ed agganci per foro quadro.**

**See-through containers, clear extractable drawers, closing locks and hanging hooks for square holes.**

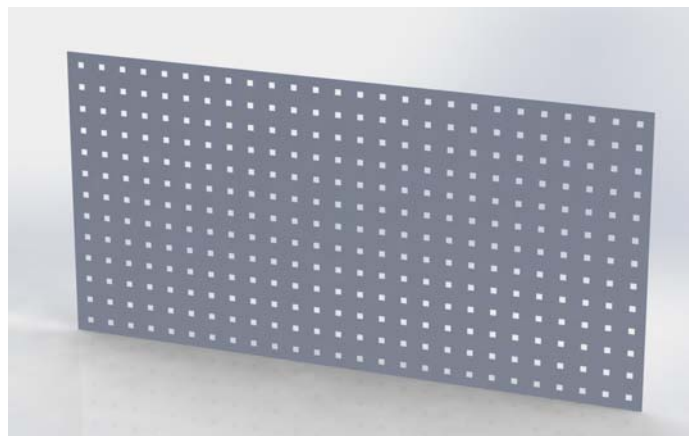


Cod.	Art.	Dimensioni / Dimensions
N094/01	MB 9	mm. 600x68x78 h
N094/02	MB 6	mm. 600x96x112 h
N094/03	MB 5	mm. 600x140x168 h
N094/04	MB4	mm. 600x178x206 h
N094/05	MB 5	mm. 600x210x247 h

## Pannelli foro quadro Wall panelling with square holes

**Pannello di rivestimento foro quadro. Disponibile in 3 dimensioni.**

**Wall panelling square holes. Available in 3 sizes.**



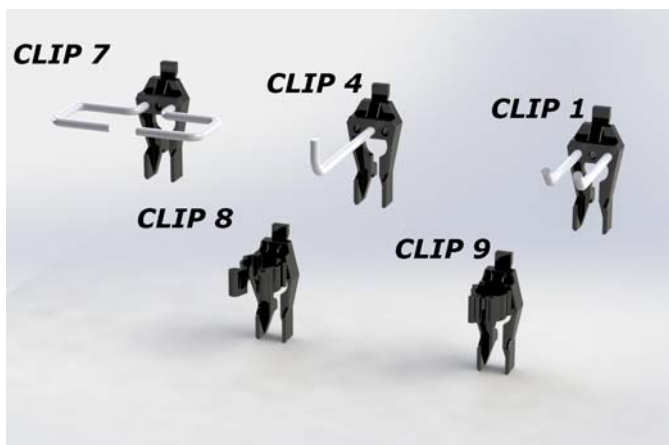
Cod.	Art.	Dimensioni / Dimensions
N095/00	PNL Q	mm. 1000x500
N095/02	PNL 2	mm. 1000x250
N095/03	PNL 3	mm. 500x500
325	P M AIR	mm. 500x500

## Supporto portautensili SPU support



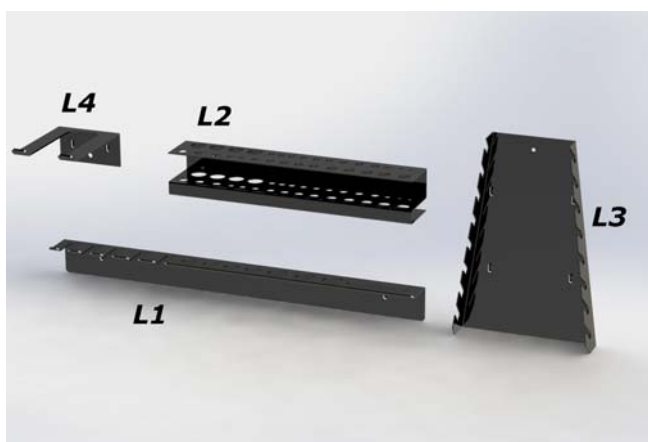
Cod.	Art.	Dimensioni / Dimensions
N096/01	SPU	mm. 275

## Ganci in plastica Clip hooks



Cod.	Art.	Descrizione / Description
N097/01	Clip 1	3 pz. /pcs.
N097/03	Clip 4	5 pz. /pcs
N097/06	Clip 7	6 pz. /pcs
N097/07	Clip 8	6 pz. /pcs
N097/08	Clip 9	6 pz. /pcs

## Ganci in lamiera L hooks

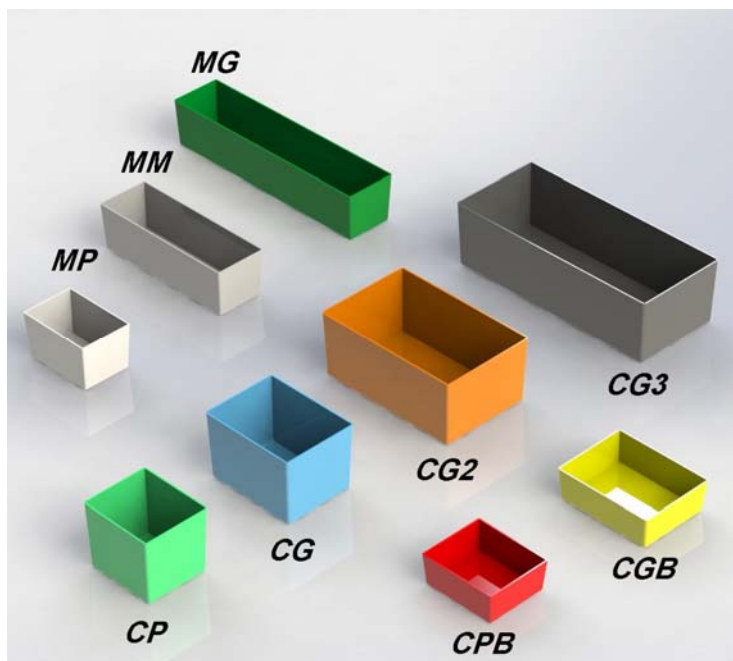


Cod.	Art.	Descrizione / Description
B024/01	L1	Cacciaviti / screwdrivers
B024/02	L2	Punte / bits
B024/03	L3	Chiavi/ spanners
B024/04	L4	Martello / hammer



## **Vaschette in plastica antiurto** **Shockproof plastic boxes**

**Vaschette in plastica antiurto per contenitori, porta minuterie e valigie.**  
**Shockproof plastic boxes for small parts containers and cases.**



<b>Cod.</b>	<b>Art.</b>	<b>Dimensioni /Dimensions</b>
N100/01	MP	mm. 75x50x47 h
N100/02	MM	mm. 155x50x47 h
N100/03	MG	mm. 233x50x47 h
N100/04	CP	mm. 72x61x65 h
N100/05	CG	mm. 72x95x65 h
N100/06	CPB	mm. 72x61x33 h
N100/07	CGB	mm. 72x95x33 h
N100/08	CG2	mm. 150x95x65 h
N100/09	CG3	mm. 255x95x65 h

## **Antifurto Ufo** **Ufo security**



<b>Cod.</b>	<b>Art.</b>	
N101/00	UFO	